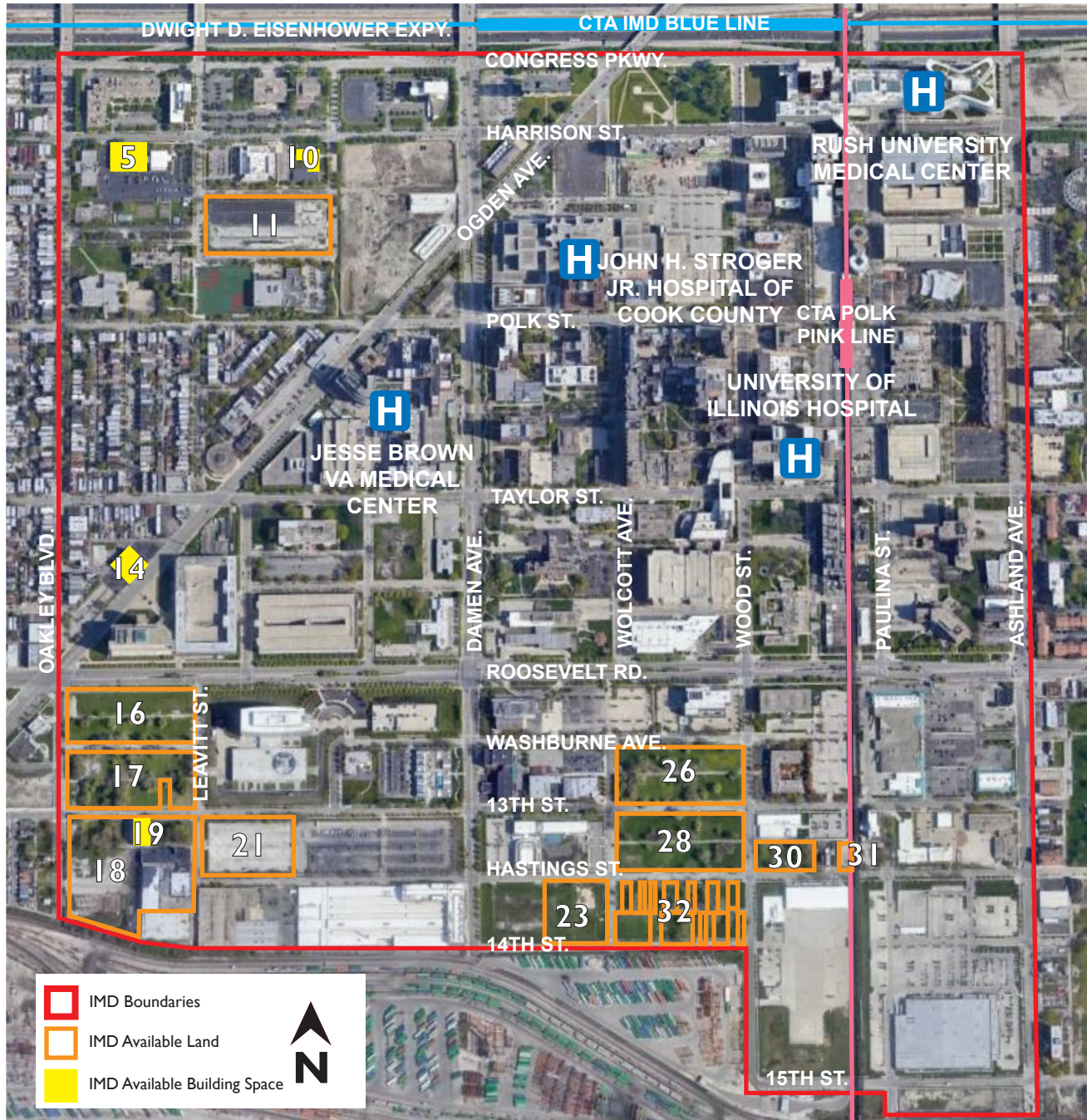


Illinois Medical District - Available Real Estate



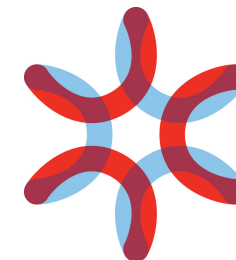
AVAILABLE BUILDING SPACE

LABEL	BUILDING ADDRESS	RENTABLE SF
5	2225 W. Harrison	2,338 and 7,555
10	600 S. Hoyne	9,473
14	2240 W. Ogden	3,060
19	2235 W. 13th Street	28,577

AVAILABLE LAND

LABEL	LAND SITES	ACREAGE
11	701 S. Leavitt	3.68
16	Block 101	3.16
17	Block 105	3.30
18	Block 111-112	7.00
21	Block 113	2.25
23	Block 212 - East	1.67
26	Block 205	3.69
28	Block 209	3.70
30	Block 210 - West	0.80
31	Block 210 - East	0.25
32	Block 213	2.60

For all real estate inquiries, contact:
 Chris Fahey, Director of Real Estate Operations
cfahey@medicaldistrict.org
 312-459-6405



**ILLINOIS
 MEDICAL
 DISTRICT**